



## THE JAM FACTORY 27 GREEN WALK LONDON, SE1 4TX

**£3,250 PER MONTH**

The Jam Factory is an iconic industrial conversion set in a thriving location, close to Borough Market.

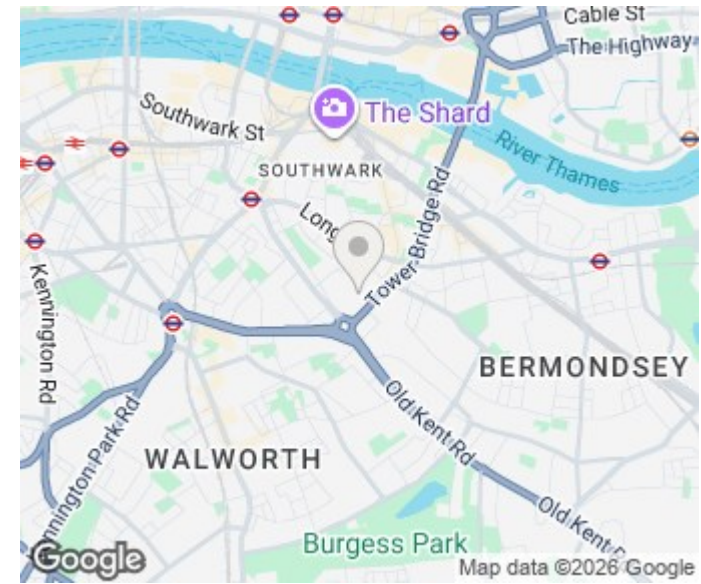
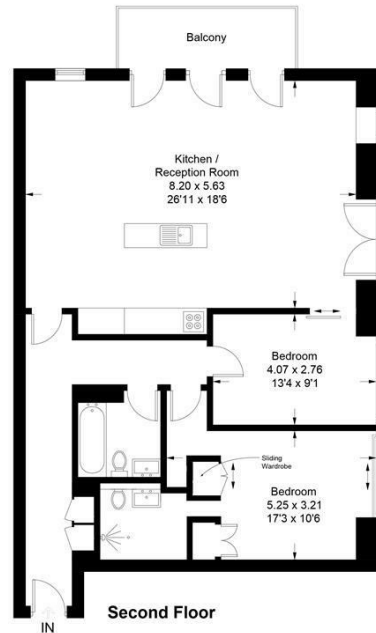
This fabulous second floor, unfurnished apartment enjoys the benefits of a large south facing balcony and comprises two double bedrooms, two bathrooms, a spacious open plan dual aspect kitchen/reception leading to the balcony. Neutral decor, wood floors throughout.

Within the block there is a bike store and a dedicated private parking space available upon separate negotiation. All set securely behind the original 1901 gates and monitored by 24 hour concierge service alongside peaceful landscaped gardens.

Ideally located for access to the City and Canary Wharf and close to numerous excellent local amenities including the world-famous Borough Market, Bermondsey Street and the iconic River Thames. Set between London Bridge, Elephant and Castle and Bermondsey tube stations with a range of boutique cafes, restaurants and bars close by.

## The Jam Factory, London, SE1

Approximate Gross Internal Area = 111 sq m / 1195 sq ft



Energy Efficiency Rating		
	Current	Potential
Very energy efficient - lower running costs		
(92 plus) <b>A</b>		
(81-91) <b>B</b>		
(69-80) <b>C</b>	78	84
(55-68) <b>D</b>		
(39-54) <b>E</b>		
(21-38) <b>F</b>		
(1-20) <b>G</b>		
Not energy efficient - higher running costs		
<b>England &amp; Wales</b>	EU Directive 2002/91/EC	

**LAURENT**  
RESIDENTIAL

Barnes Lettings  
Essex Lodge  
1A Barnes High Street  
Barnes  
London  
SW13 9LB

0208 876 4466  
property@laurentresidential.co.uk  
www.laurentresidential.co.uk

Agents Note: Whilst every care has been taken to prepare these particulars, they are for guidance purposes only. All measurements are approximate and are for general guidance purposes only and whilst every care has been taken to ensure their accuracy, they should not be relied upon and potential buyers/tenants are advised to recheck the measurements